

Caring Together: Update

Dr. David Supple, CCG Clinical Chair
Rob Persey, Executive Director



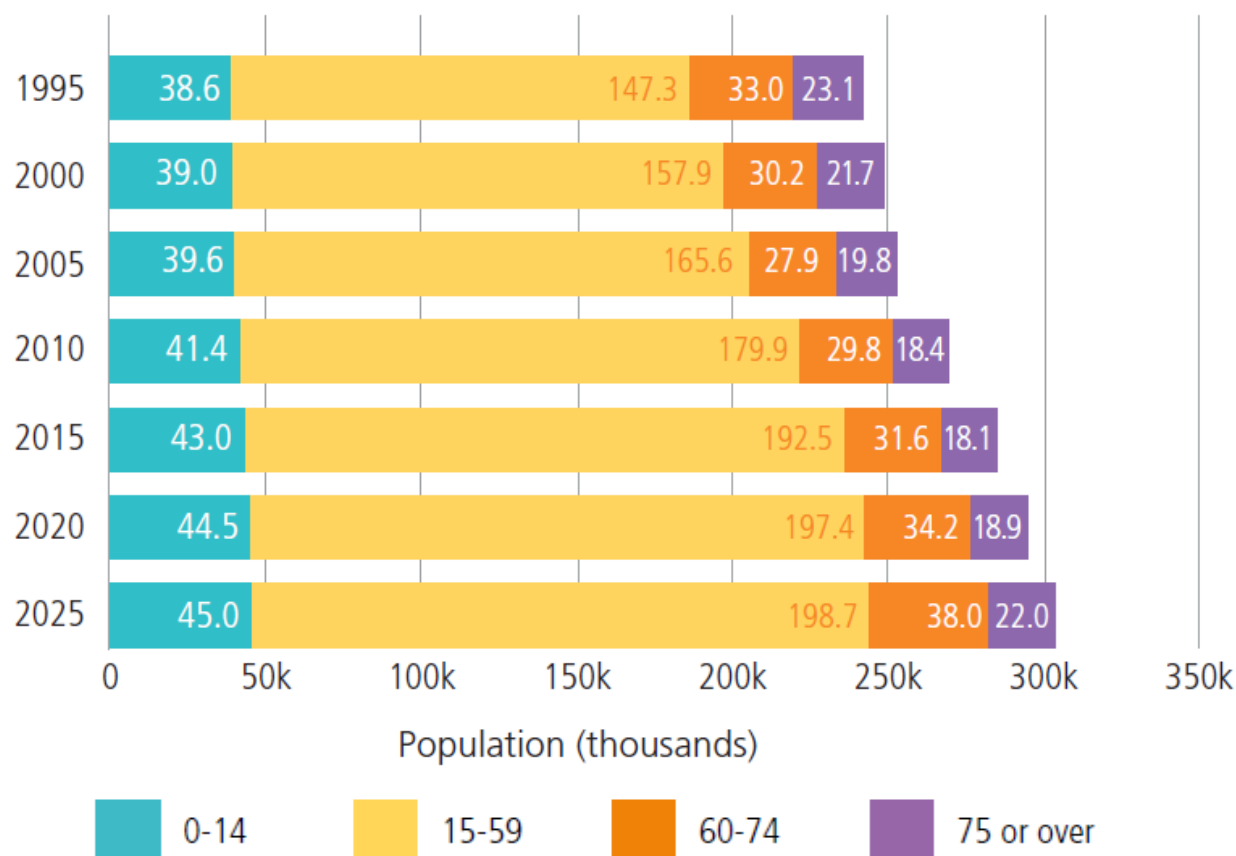
Content

- Joint Overview of Caring Together and Integration progress
- Highlight key health and social care challenges facing our city
- What does this mean in terms of demand
- How are we addressing this and how are we engaging with our residents and other stakeholders
- How are we managing the complex changes

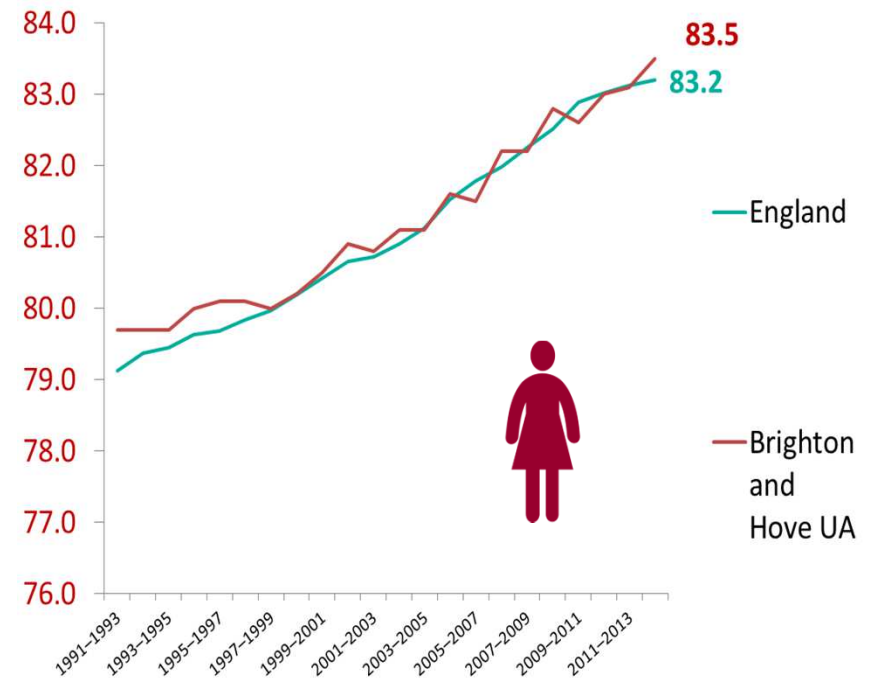
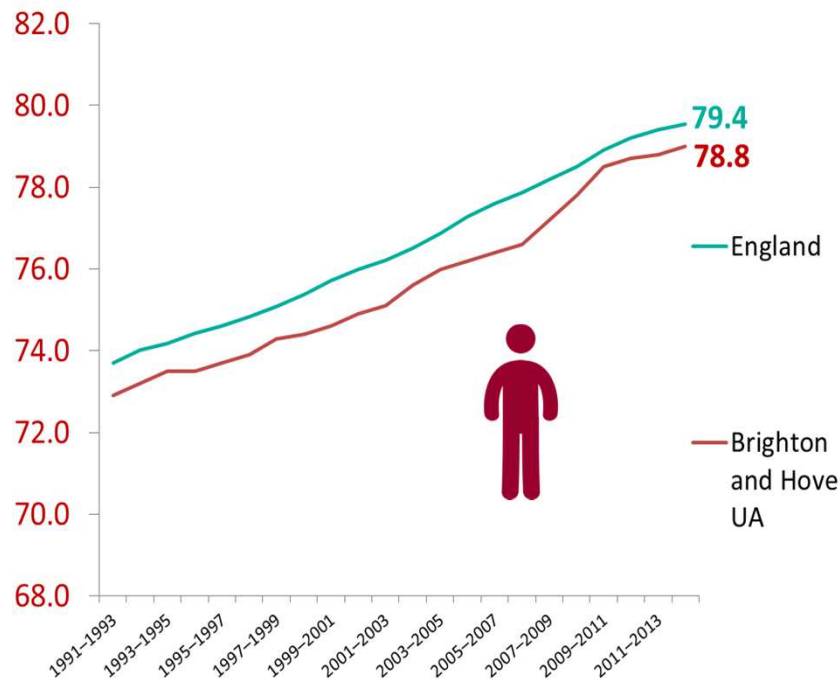


Our population is growing

Figure 1 Population (thousands) by broad age band, Brighton & Hove, 1995 to 2025



Our population is living longer



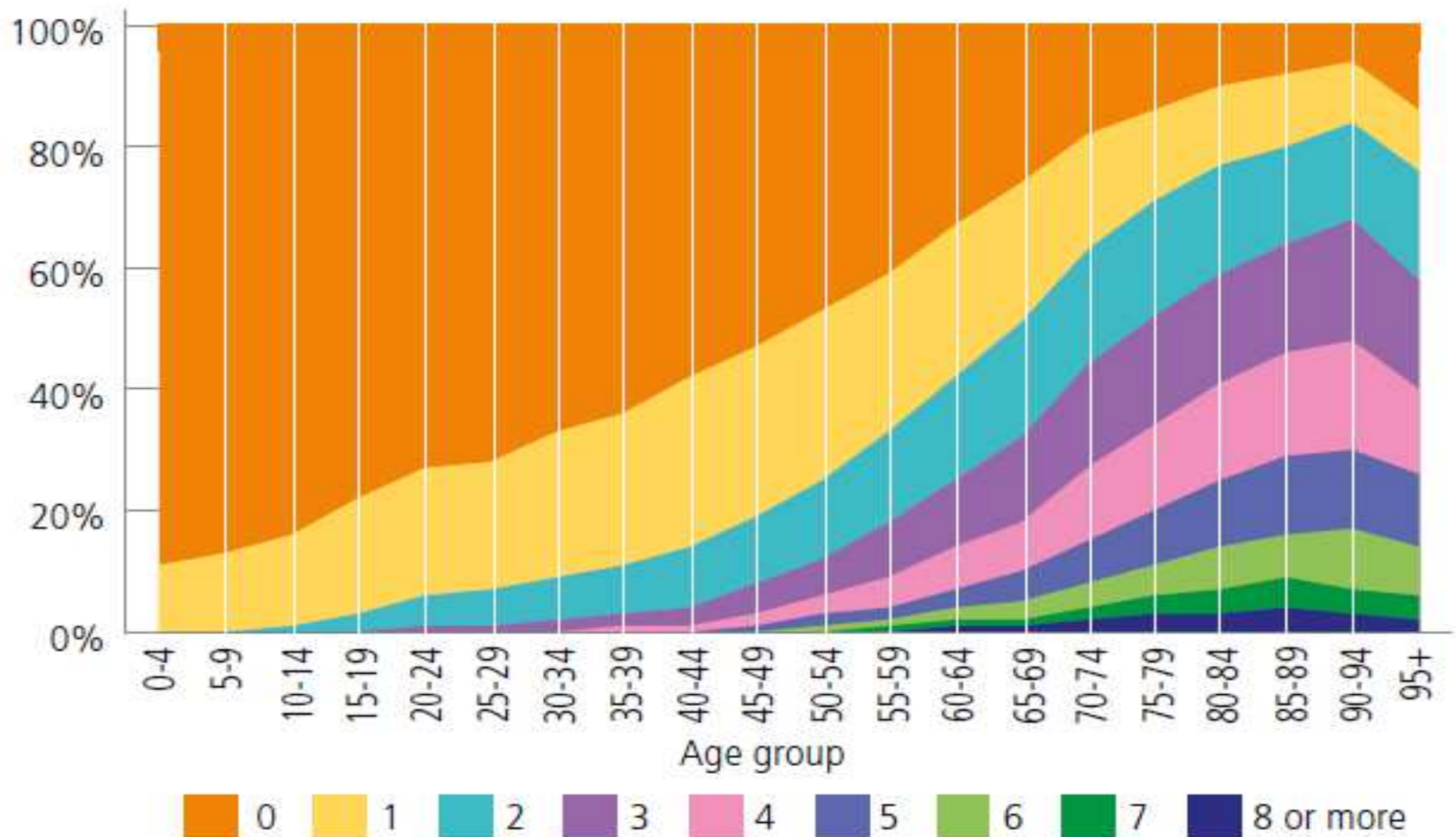
We are living longer but in ill-health - and health inequalities persist

- Between 2001/3 and 2013/15 life expectancy **increased** for males from 75 to 79 years and from 81 to 84 years for females.
- Between 2009/11 and 2013/15 healthy life expectancy **decreased** from 64 to 62 years for males and 64 to 61 for females.
- The healthy life expectancy gap between the most and least affluent local people is 14 years for males and 12.5 years for females.



The challenge of multi-morbidity:

Long term conditions by age Brighton & Hove 2017



Summary

- Demand is increasing
- Complexity is increasing
- Potential for cost to increase is significant
- Integration has the potential to help reduce and better manage demand
- Caring Together is a clinically driven programme to identify improved pathways and models of care
- Considerable future opportunity from further alignment, focussing now on first steps



Caring Together

Current position

- **The Care Programmes that are currently out for discussion are:**
 1. Preventative Services and Community Care.
 2. Planned Care and Cancer.
 3. Access to Urgent Care and Primary Care.
 4. Mental Health, Learning Disability, Children and Families.
 5. Medicines Optimisation.
 6. Primary Care Development.
- **The objective is to arrive at a system-wide agreement on the outcomes, benefits and timescales of these care programmes by 8 January 2018.**



Big Health & Care Conversation

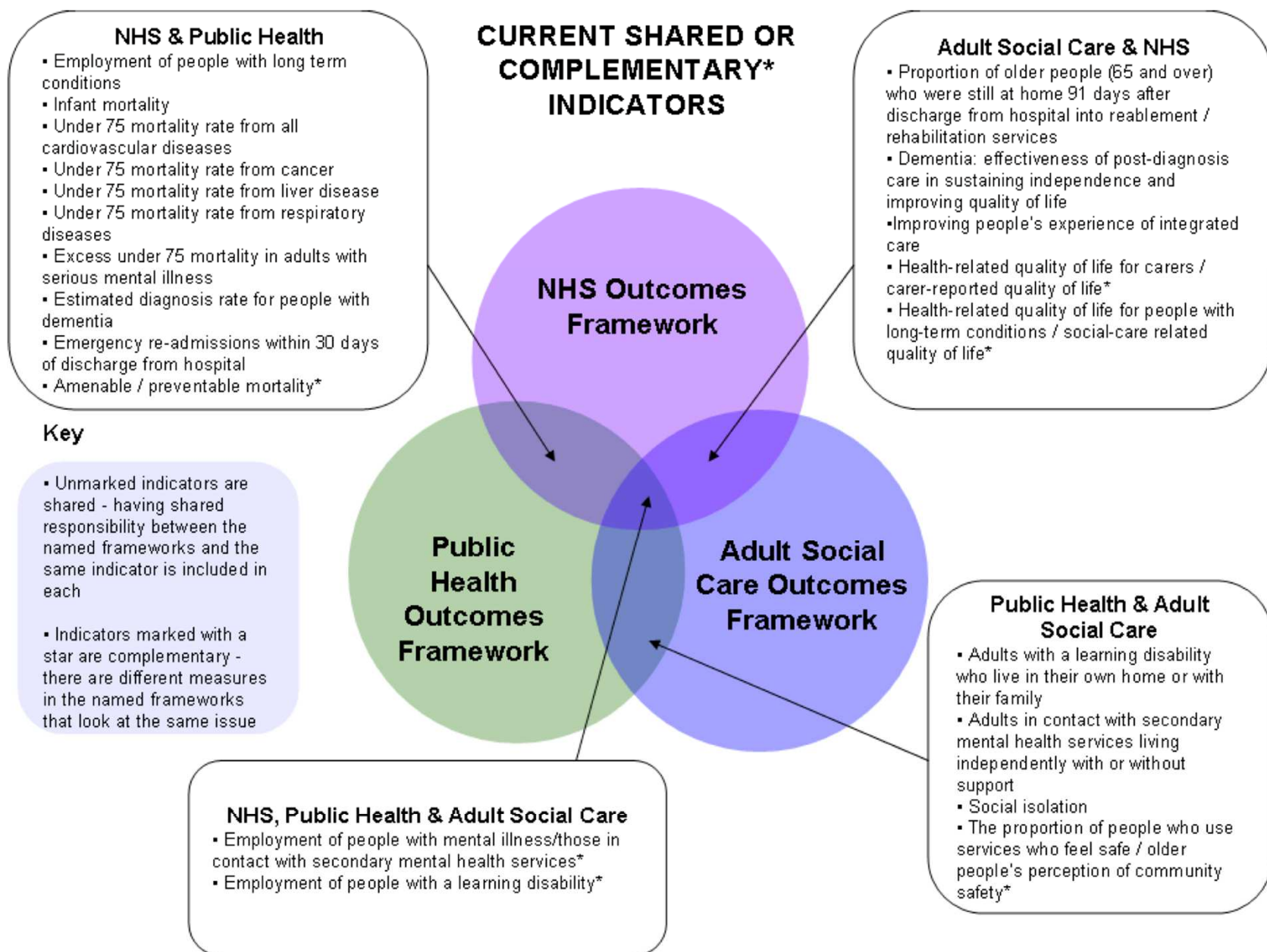
- Continuing Big Health & Care Conversation communications and engagement during September 2017 and rolling until January 2018
- Significant amounts of engagement taken place, conversations included two open debates about STP and informal 'drop ins' for staff
- Big Health & Care Conversation evaluation report will come to the Health & Wellbeing Board in March 2018
- Our engagement will continue in 2018 building on data gained in the first phase



Caring Together / Integration

- Social Care and Health working together more closely
- Whole systems approach to managing demand
- Whole Systems Reporting group -more sophisticated analysis to understand demand across the whole Health and Care System
- Caring Together Outcomes Framework
 - overarching indicator set to track progress towards high level outcomes, evidence effectiveness of new ways of working and highlight areas requiring improvement.
 - Combines existing statutory frameworks and local transformation metrics





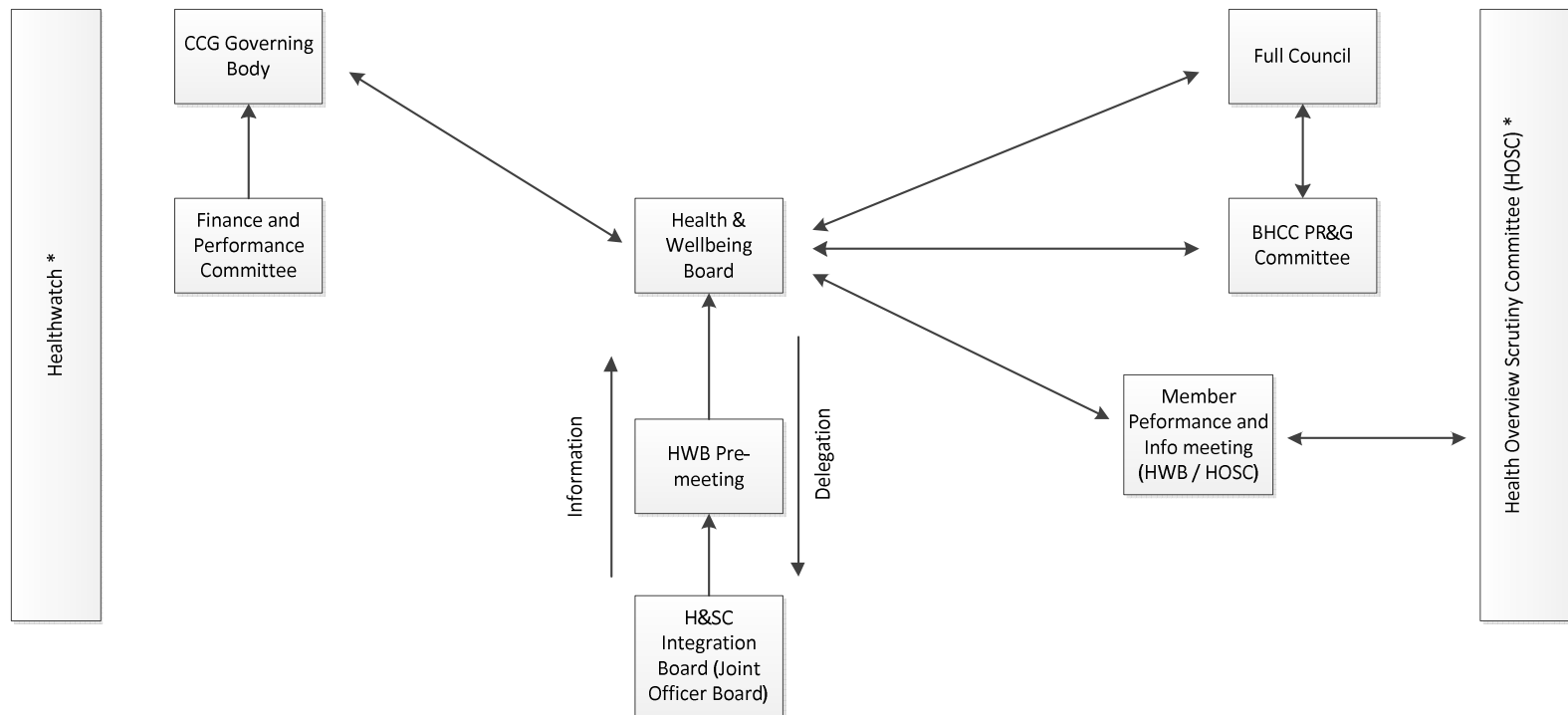
Manging the process

- Integration paper going to CCG GB in November and approved at Brighton & Hove City Council Policy, Resources and Growth Committee 12 October 2017
Report available here:
[https://present.brighton-hove.gov.uk/Published/C00000912/M00006704/\\$\\$ADocPackPublic.pdf](https://present.brighton-hove.gov.uk/Published/C00000912/M00006704/$$ADocPackPublic.pdf)
- With recent announcement of establishment of Central Sussex Commissioning Alliance from January 2018 we are actively discussing a complementary relationship with city based integration proposals
- Formally begin shadow year working together from April 2018
- Start to see some changes now e.g. Board papers being more strategically focused
- The shadow year governance structure follows



45

Proposed shadow year Governance arrangements commencing April 2018



Hove Caring Together.
* Whole system scrutiny



Questions and discussion

Dr. David Supple
Rob Persey

